

EFFICIENCY MAINE TRUST

TURNING CHALLENGES INTO OPPORTUNITIES – MAINE UPDATE

MICHAEL STODDARD, EXECUTIVE DIRECTOR

13TH ANNUAL AESP – NEEC CONFERENCE

“ENVISIONING THE FUTURE: ENERGY SERVICES IN THE NEXT GENERATION”

OCTOBER 31, 2013 • WESTBOROUGH, MA

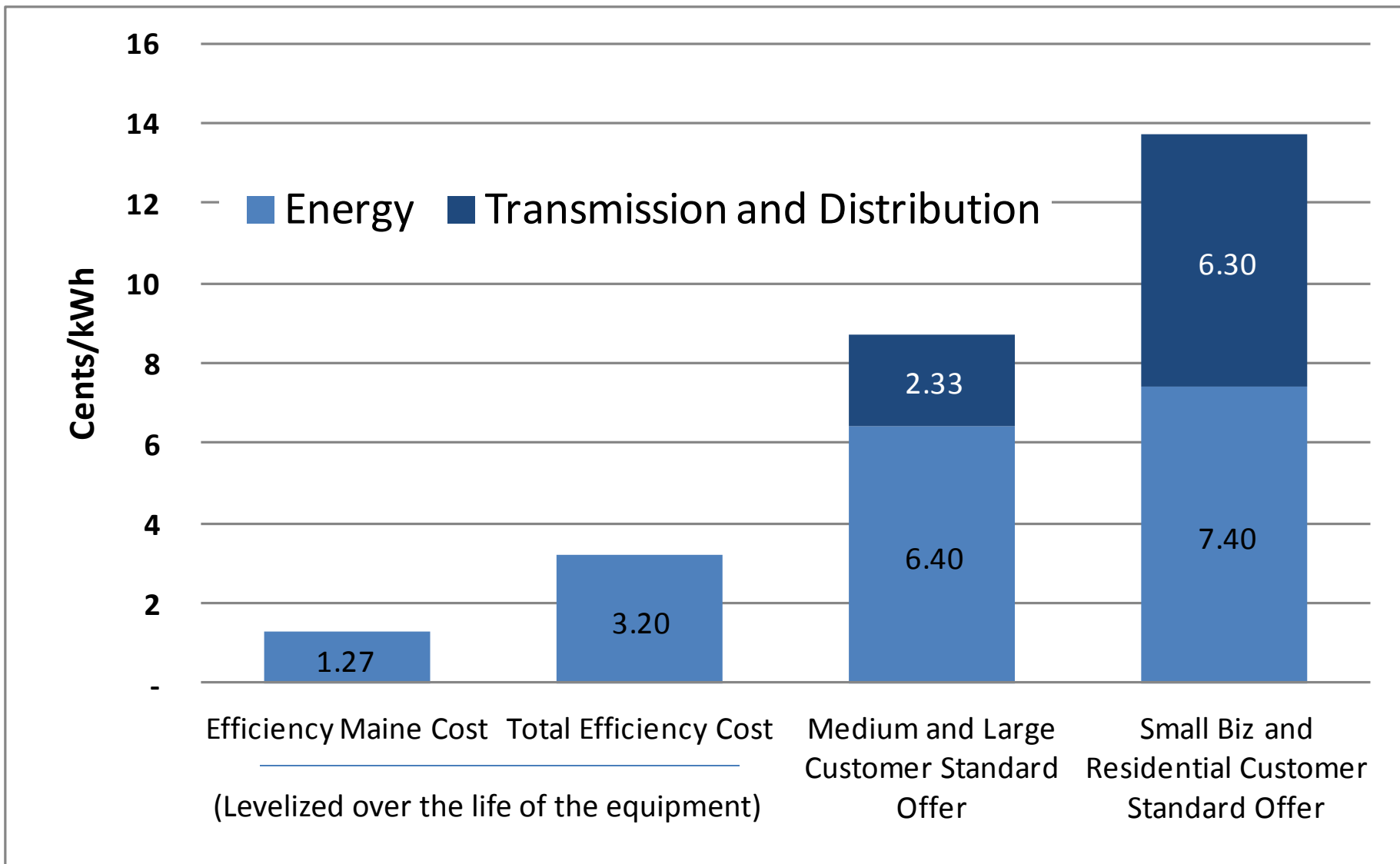


The Efficiency Maine Trust

- Serves as a statewide utility to deliver energy efficiency
 - Covers entire state, all utility territories
 - Advancing integrated delivery of electric, natural gas and unregulated fuel/GHG measures
- Independent
 - Stakeholder Board of Trustees
 - Regulated by the PUC
 - Not state employees
- Took over administering energy efficiency and small renewables programs in 2010
 - Administered by PUC from 2002-2010
 - Administered by utilities prior to 2002

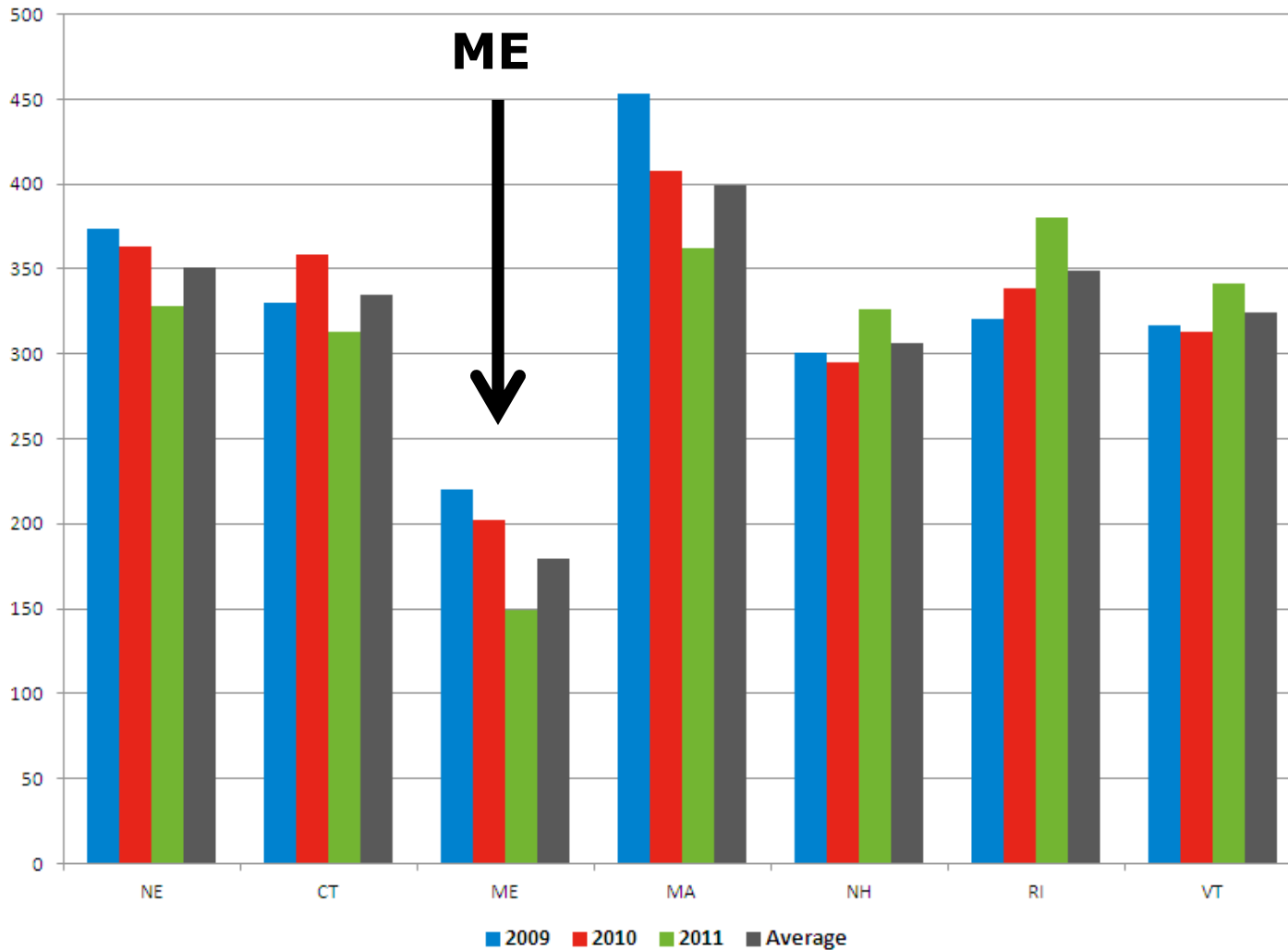


The Lowest Cost Energy in Maine (2012 Prices)



Low Cost to Harvest EE in Maine (2009-11)

2013 EEF Annual Energy production Costs: Dollar per MWh



Source:
ISO-NE,
EE Working Group,
2013 Energy-
Efficiency Forecast
Data Review,
10/15/12, Slide 15

New Law

- “Omnibus Energy Bill” of 2013, LD 1559, 126th Legislature
- EE Provisions of Law
 - Electric EE - Strengthens the “All Cost Effective” funding level and process
 - Nat Gas EE - Extends Natural Gas Conservation programming (and funding) to all utilities and sets level at “All Cost Effective”
 - All Fuels EE - Opts in to RGGI Phase 2; expands the Trust’s objectives for use of RGGI funds for “all fuels”
 - Misc.
 - Non-Transmission Alternatives (NTAs)
 - Municipal Streetlights
- Other Noteworthy Provisions
 - PUC authority to contract for gas capacity
 - Offshore wind bidding process



New Programs

■ Residential

- New Incentives launched 9/11/13
 - Up to \$1,500 per building
 - Air sealing with energy assessment, data collection, report
 - Best-in-class heating and insulation improvements
 - Menu or Custom paths
- Low interest, long-term project loans

■ C & I

- To “reduce electricity consumption or reduce greenhouse gas emissions and lower energy costs at commercial or industrial facilities”
- Program design TBD
- Desire to continue All Fuels saving measures through:
 - Multi-Family Wx and Heating
 - New Construction incentives
 - Retro-Commissioning
 - Heat pumps
 - Industrial Heat Recovery



Residential Direct Install (for Wx)

Air Sealing with Energy Assessment

RESULTS

Completions 8000

Avg. PRE CFM50# 3235

Avg. POST CFM50# 2687

Avg. Reduction CFM50 548

%Air Flow Reduction 17%

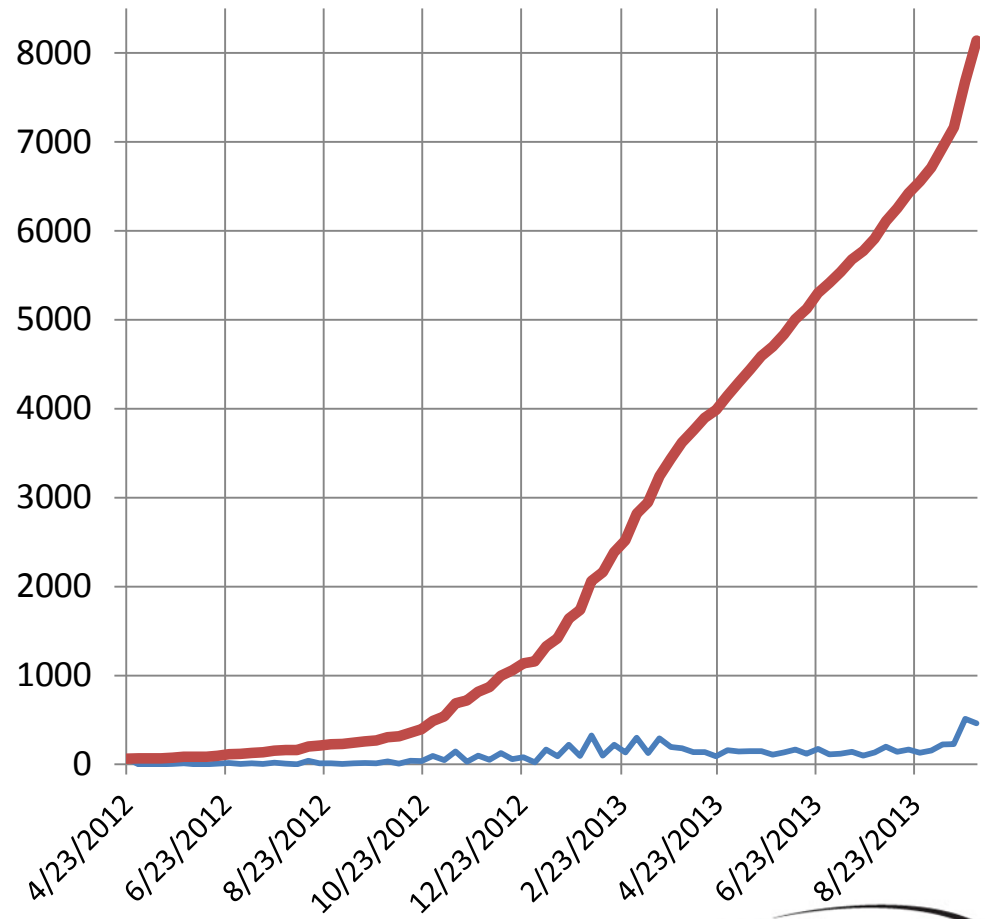
Incentive (6 hrs sealing) \$600

Avg. Hours per Project 11.3

Avg. Total Project Cost \$826

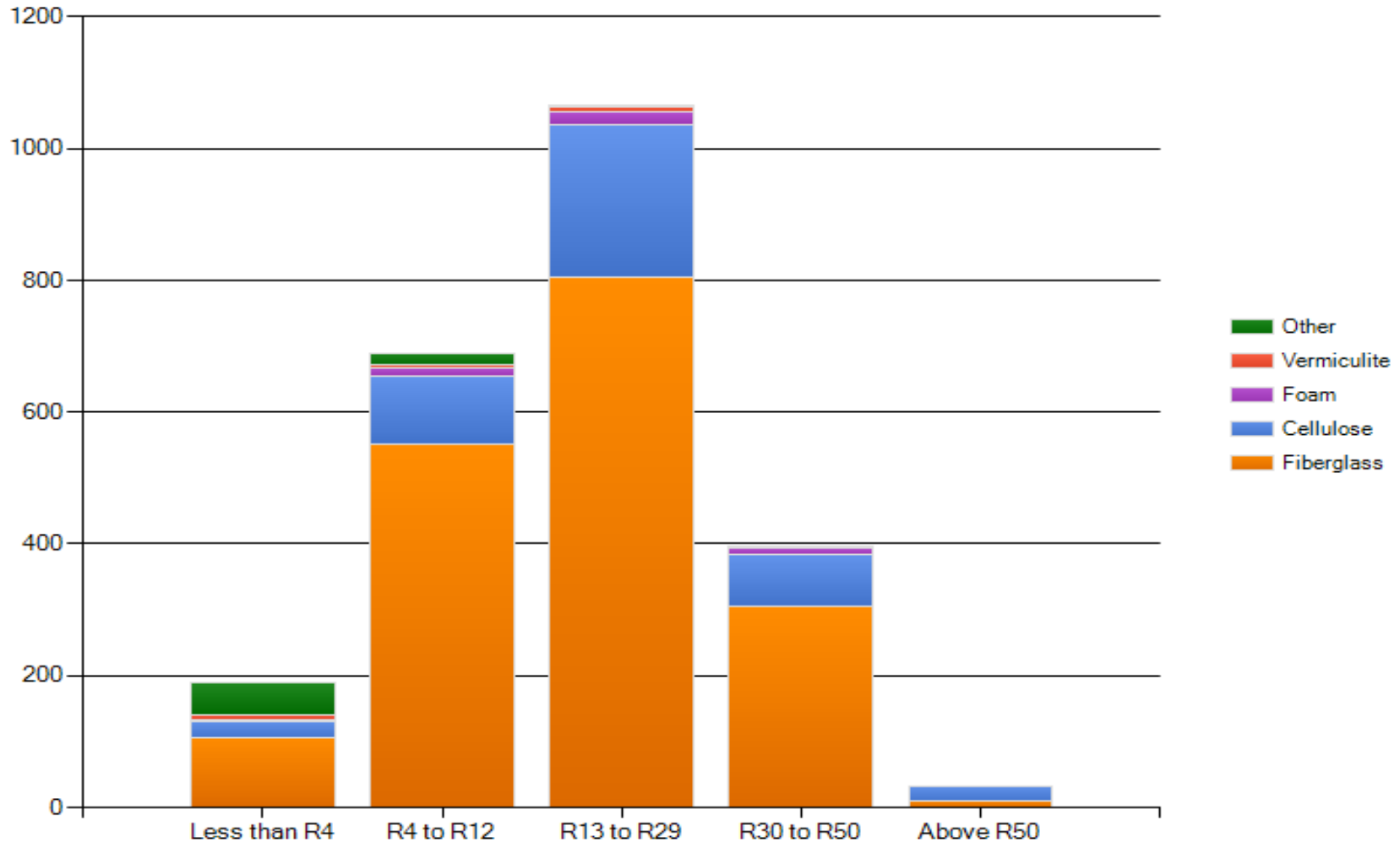
Spillover 0.77

TRC B:C 4.1



An Economic, Environmental & Moral Imperative for Maine

PRE average attic insulation R value and type



On The Horizon – Challenges and Opportunities

- Program Design
 - Stretching Delivery Costs
 - Increasing Participation

- New frontiers for EE as a low cost resource
 - Alternative T&D Capacity
 - Mitigation for Natural Gas Basis Differential

- Integrating Smart Grid Capabilities

- Electrification
 - Heat Pumps
 - Supplemental Space Heating
 - Hot Water Heating
 - EVs

